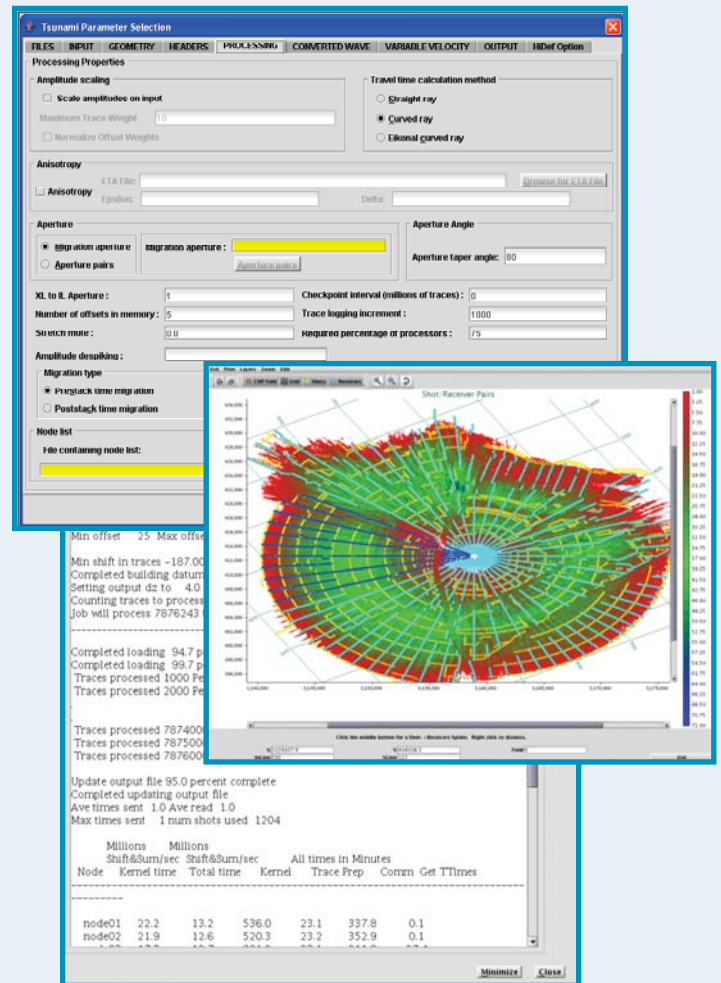


TSUNAMI 2D/3D Kirchhoff Migrations

Pre-stack Time and Depth Migration

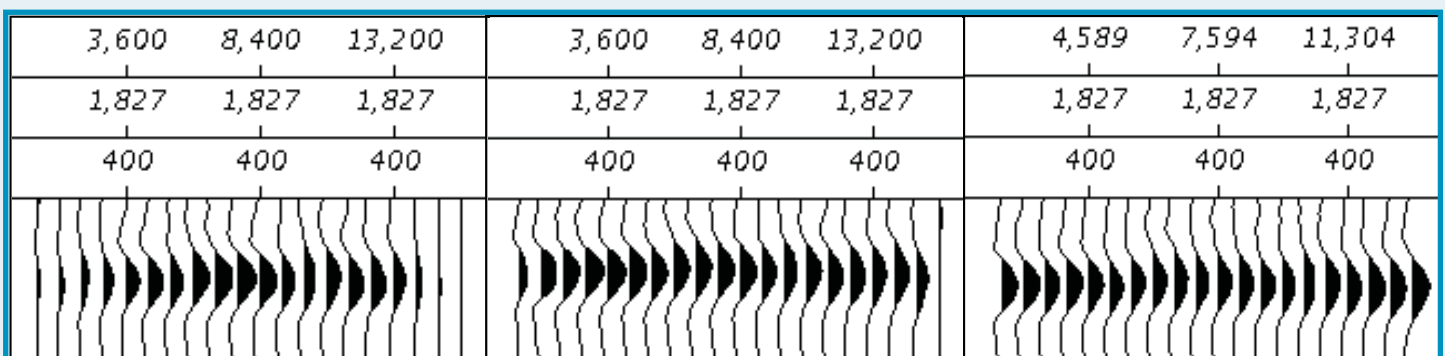
Easy to Use

- The intuitive graphical user interfaces make job setup easy and quick
- New users can become productive within days
- Comprehensive job log provides a powerful tool for tracking progress and diagnosing errors
- Fold maps, trace offset and azimuth histogram displays



Superior Imaging Quality

- Handles steep dips
- Capable of imaging beyond 90°
- Curved ray travel times use either 6th order NMO or eikonal methods for PSTM
- Paraxial ray tracer uses wave front reconstruction method for PSDM
- Amplitude preserving for AVO
 - Sophisticated trace weighting to compensate for irregular acquisition
 - Trace offset balancing



Left – migrated gathers with no weights. Middle – migrated gathers with weights applied and normalized. Right – migrated gathers with weights applied and normalized, and balanced offset bins. The gathers on the right are compliant for AVO analysis.

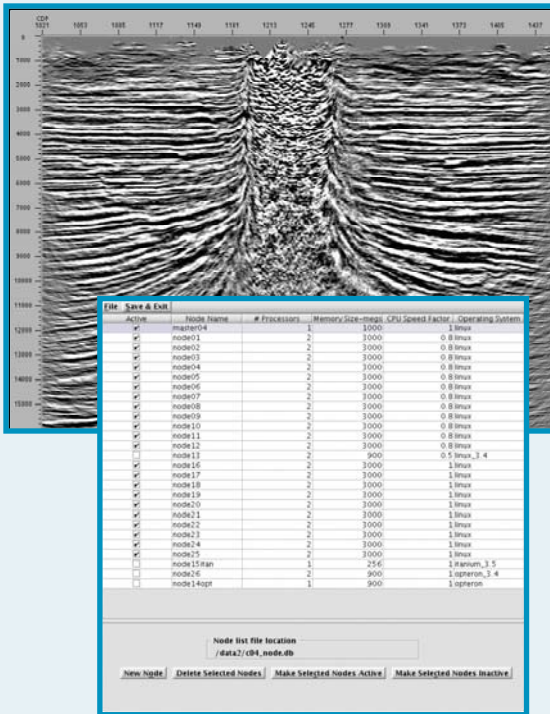
The Fastest in the Industry

Scalability and Performance

- Patented I/O method for Linux clusters (see U.S. Patent 6,915,212)
- Heterogeneous operating environment
 - Intel, AMD and SGI nodes
 - Different speeds, memory amounts and CPUs
 - Does not use NFS, MPI or PVM
 - Does not require disk space on the compute nodes
 - Low memory requirement
 - Flexible licensing
 - Only commercial imaging software on IBM Blue Gene[®] Supercomputer

Compatibility

- Input data can be sorted in any order
- Reads SEG-Y seismic and velocity data
- Reads Focus[®], ProMax[®] and SeisUP[®] formats

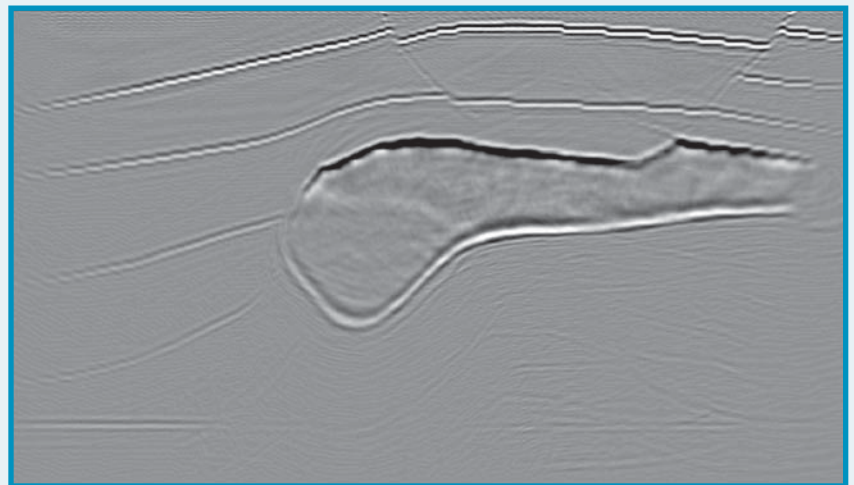


Special Processing

- S-wave migration
- Variable velocity migration
- Variable eta migration for anisotropy
- Azimuthally dependant migration
- Huygens HiDef migration

Customer Support

- Submit support ticket via online help desk
- Reputable, dependable support staff
- Customized programming



Pre-stack Kirchhoff depth migration of the SEG C3-NA Salt Model.

Tsunami Development
10111 Richmond Ave Suite 230
Houston, TX 77042
713.783.1435
www.tsunamidevelopment.com

When your image is everything™

